



Enjoy your new upholstered furniture!

The manufacturer takes no responsibility for damages or injuries resulting from improper use or incorrect operation. Warranty claims do not apply to mechanism changes or improper use.

www.schillig.com



HEADREST

with notch function or vapour pressure

advice for your upholstered furniture
N° 37

– English –



37.17-06-29;D-E-1 Subject to change.



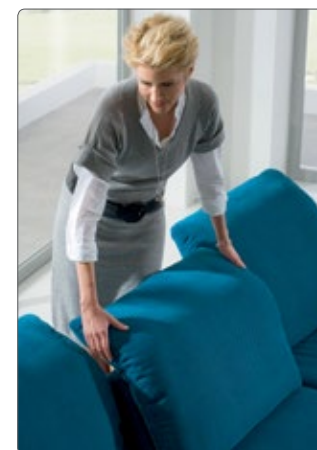
HEADREST

with notch function or vapour pressure

You've chosen correctly!
You can adjust the headrest with this model for an optimum relaxation.

Please note the instructions on the opposite page before first usage.

Depending on the model there are different mechanisms.
Before first use, please acquaint yourself with your upholstered furniture.



You can operate the functions while sitting or standing behind the furniture.

Variation 1: notch function
Grab the back cushion outside with both hands and move it up forward to adjust the headrest in different positions. You'll notice the notch function engaging with the current position. At the highest position the headrest unbars and moves back to the first position.

Please note: Don't pull the headrest by force.

Variation 2: vapour pressure
With one movement by hand you can pull the head rest upwards. If it gets to the right position it engages and you can lean back comfortably. To get the headrest into the first position, please push slightly against it.



– English –