

## [floyd]

*Stylish and functional.*

*The setting options are just as variable as they technically robust and **durable**. [floyd] has a headrest function. In addition, the model can be equipped with a **motorised** seat extension, which converts the seat into a reclining surface in no time at all.*



Cover: Z69/50 cognac



spring core



seat extension



headrest



contrasting thread



grid



castors

## Armchairs



**ME55**  
individual armchair

76/86/81/45

## Sofas



**N70**  
sofa

210/106/71/45

item no. headrest adj. =  
KV2 (surcharge)

item no. seat ext. motor. =  
A02 (surcharge)

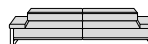


**N80**  
large sofa

230/106/71/45

item no. headrest adj. =  
KV2 (surcharge)

item no. seat ext. motor. =  
A02 (surcharge)



**N90**  
large sofa

250/106/71/45

item no. headrest adj. =  
KV2 (surcharge)

item no. seat ext. motor. =  
A02 (surcharge)

## Elements with armpart right



**N70R**  
sofa with armpart



**N80R**  
large sofa with armpart



**N90R**  
large sofa with armpart

175/106/71/45

item no. headrest adj. =  
KV2 (surcharge)

item no. seat ext. motor. =  
A02 (surcharge)

195/106/71/45

item no. headrest adj. =  
KV2 (surcharge)

item no. seat ext. motor. =  
A02 (surcharge)

215/106/71/45

item no. headrest adj. =  
KV2 (surcharge)

item no. seat ext. motor. =  
A02 (surcharge)



**N70L**  
sofa with armpart



**N80L**  
large sofa with armpart



**N90L**  
large sofa with armpart

175/106/71/45

item no. headrest adj. =  
KV2 (surcharge)

item no. seat ext. motor. =  
A02 (surcharge)

195/106/71/45

item no. headrest adj. =  
KV2 (surcharge)

item no. seat ext. motor. =  
A02 (surcharge)

215/106/71/45

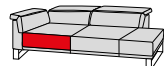
item no. headrest adj. =  
KV2 (surcharge)

item no. seat ext. motor. =  
A02 (surcharge)

## End elements right



**K70R**  
one arm chaise



**EG70R**  
corner sofa with ottoman

108/170/71/45

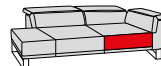
item no. headrest adj. =  
KV1 (surcharge)

106/230/71/45

item no. headrest adj. =  
KV3 (surcharge)



**K70L**  
one arm chaise



**EG70L**  
corner sofa with ottoman

108/170/71/45

item no. headrest adj. =  
KV1 (surcharge)

106/230/71/45

item no. headrest adj. =  
KV3 (surcharge)

Ottomans & accessories



G70  
ottoman



G140  
large ottoman

Z  
base leg

71/70/45/45  
item no. for castors = RO  
(surcharge)

140/70/45/45  
item no. for castors = RO  
(surcharge)



**Flexible back support**

The items can be equipped with a step-by-step headrest function for a surcharge (except armchair ME 55). Item no. = KV1, KV2, KV3.

**Extendible lying surface**

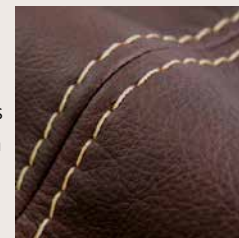
Some items can be fitted with the seat extension in return for a surcharge. The total depth extends. The sensor touch button is located in the middle under the back cushion. Item no. = A02.

**Noble leg frame**

The leg frame can be ordered in solid wood oak or solid wood walnut for a surcharge (item no. = NU, EI).

**Contrasting thread**

In some leather colours this model can be supplied with a contrasting-coloured thread, at no surcharge.

**Order information****Extendible lying surface:**

The sensor touch button for the seat extension by motor is located in the middle under the back cushion.

**Solid wood armpart frame:**

Wood is a long-lasting natural product. Different colours at the solid wooden parts may occur and are a special characteristic of this product. Solid wood cannot be processed with a regularly appearance. Differences between colour and structure cannot be avoided and do not authorize a complaint.

**Back sides of sofas:**

All pieces are genuinely upholstered at the back.

**Positioning diagram:**

Please send us a positioning diagram, depending on the amount of different variations available. We have marked the connecting sides in red for end elements in the type guide.

**Connecting sides:**

For a surcharge, the connecting sides can be supplied in the original cover instead of stretch fabric.

**Seam appearance:**

Decorative, felled or double seams may appear different in fabric and leather versions. For manufacturing reasons, seams may be left out of the fabric version or replaced with simple seams.

**Contrasting thread:**

In some leather and fabric colours, this model can be supplied with a contrasting coloured thread, at no surcharge. The colours as given can be found on the main sheet of each leather quality in the fabric/leather wagon. Please always specify the contrasting thread number or tonal colours will be supplied.

**All of the dimensions given are approximate dimensions in cm. We reserve the right to make changes. Dimensions are given as follows: width/depth/height/seat height. The depth measures contain protruding of the overlapping headrest, if the headrest is folded backwards.**

Seat depth: ca. **56 cm**

Seat depth with function extendible lying flat surface: ca. **76 cm**

Total height if back is up: ca. **90 cm**

Total depth if seat is extended: ca. **126 cm**

**Crease formation:**

Fabric and leather stretch to a lesser or larger extent under the influence of body weight, which can lead to the formation of creases in the cover. This visual change does not affect use, function and life span and it is not a defect.

**Base leg Z:**

If elements and sofas with or without an armpart are to be attached directly to elements or sofas with or without an armpart, a base leg Z is required. The base leg must be ordered separately. See price list.

**Order checklist**

- Structure and cover
- Manually headrest adj. (surcharge)
- Armpart frame design
- Ottomans
- Castors for ottomans (surcharge)
- Motorised seat extension (surcharge)
- Contrasting thread
- Positioning diagram
- Base leg Z

## Upholstered furniture frame structure

1. **Frame** – Beech wood structure
2. **Seat suspension** with permanently elastic wave springs
3. **Seat upholstery structure** – spring core with diolen cover incorporated into **ergo**-PUR-foam
4. **Back suspension** with wooden board
5. **Back upholstery structure** of **ergo**-PUR-foam with diolen cover



The design of the cross section shown here does not correspond to the model on this page of the catalogue.

## Upholstered furniture made with passion.

Your model is the product of German design and engineering. The family-owned company W.SCHILLIG has more than 70 years' experience of technical skill, trend-setting ideas, attractive design and know-how from Germany. The result is upholstered furniture that guarantees first class comfort and attention to detail. We keep sustainability and protection of resources in mind when choosing the materials we use.



The RAL quality mark for furniture stands for the certain knowledge that this is a non-hazardous piece of furniture of reliably high quality and with an attractive design. The Deutsche Gütegemeinschaft Möbel makes sure of this with numerous tests. Inspections also safeguard the testing system.



The highest European accolade for systematic, in-house, environmental management. Improvement of environmental protection services.

## Legs



wooden frame, nat. walnut, oiled.

F 18 (walnut P57)



wooden frame nat. oak, oiled

F 24 (oak P58)



metal armrest frame high-gloss chrome

F 03



metal armrest frame silver

F 06



metal castor/ottoman, **surcharge**

F 6R

### Runners:

We assemble visibly matching legs instead of the runner under the corner elements.

### Runners:

We assemble optically matching legs instead of the runner at the front of the enlarged seat of the one arm chaises.

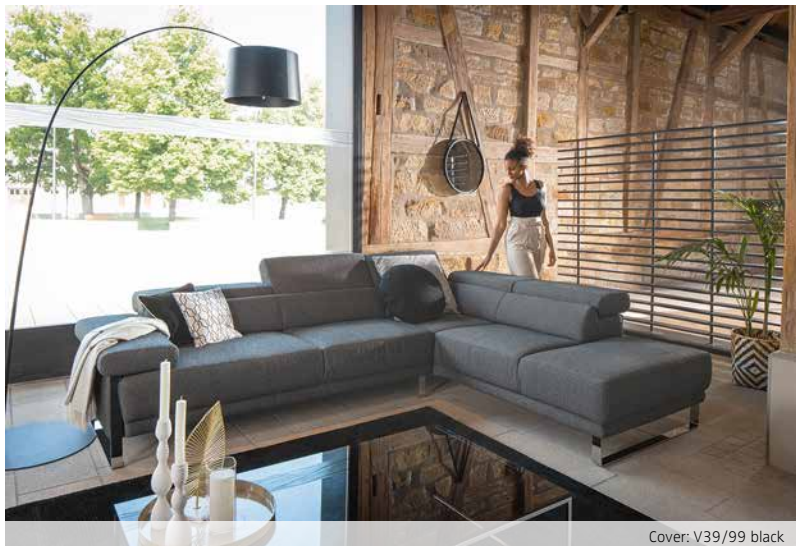
### Armrest frame:

The armrest frame does not run over the armrest of the armchair like it does at the other elements.

### Castors for ottomans:

Every ottoman can be equipped with castors against surcharge. The item number is R0. Two of the castors can be fixed.

## floyd - living room examples



corner combination  
N 80L laf - EG 70R raf

